

# POOL LIFT

*Designed exclusively for pools*



Regain independent access to your pool!



## POOL LIFT

The PoolLift is designed to enable wheelchair users to independently enjoy the benefits of a swimming pool. The opportunity to take a refreshing 'dip' or to engage in water aerobics all become possible with the PoolLift

The simple construction and its aesthetically appealing design make this stainless steel, hydraulic water powered lift perfect for use in both public and private pools.

The ease and simplicity of operation are the key features of this lift. No attendant help is required to use it. Control levers at the entrance level as well as at the water level allow the active wheelchair user to control the lift without assistance.

The height of seat can be individually adjusted and is automatically turned by 90° when the seat is lowering or lifting.

The PoolLift is installed as easy as it is uninstalled; No underwater mounting necessary! The water pressure of the buildings water installation can be used ( minimum pressure 3.8bar). Furthermore a wheel assembly can be provided in order to facilitate the removal of the lift for storage.

# ADVANTAGES

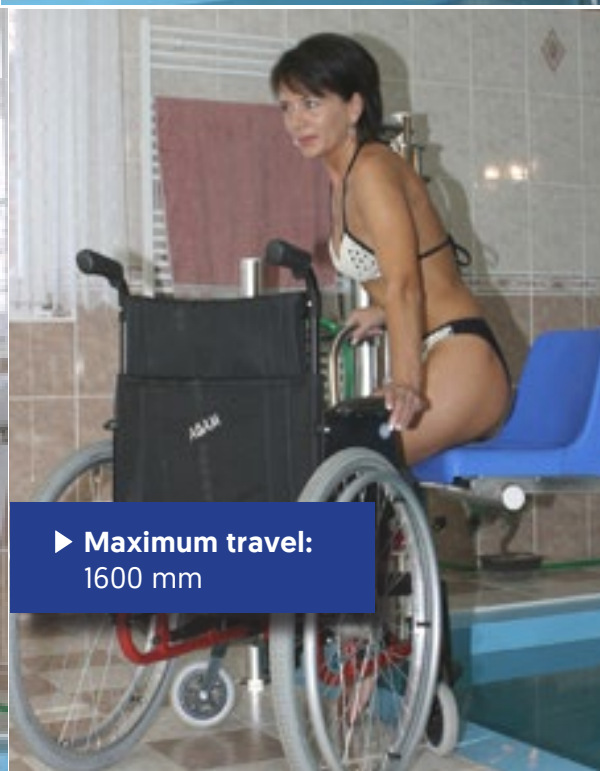
- No assistance required allowing independent access to the pool
- **No underwater fixing required**
- Elegant design in stainless steel
- **Simple and fast to install**
- Applicable for indoor and outdoor use
- **Runs on 4 bar household water pressure**



► **Max. loading capacity:**  
130 kgs



► **Required water pressure:**  
4 bar



► **Maximum travel:**  
1600 mm

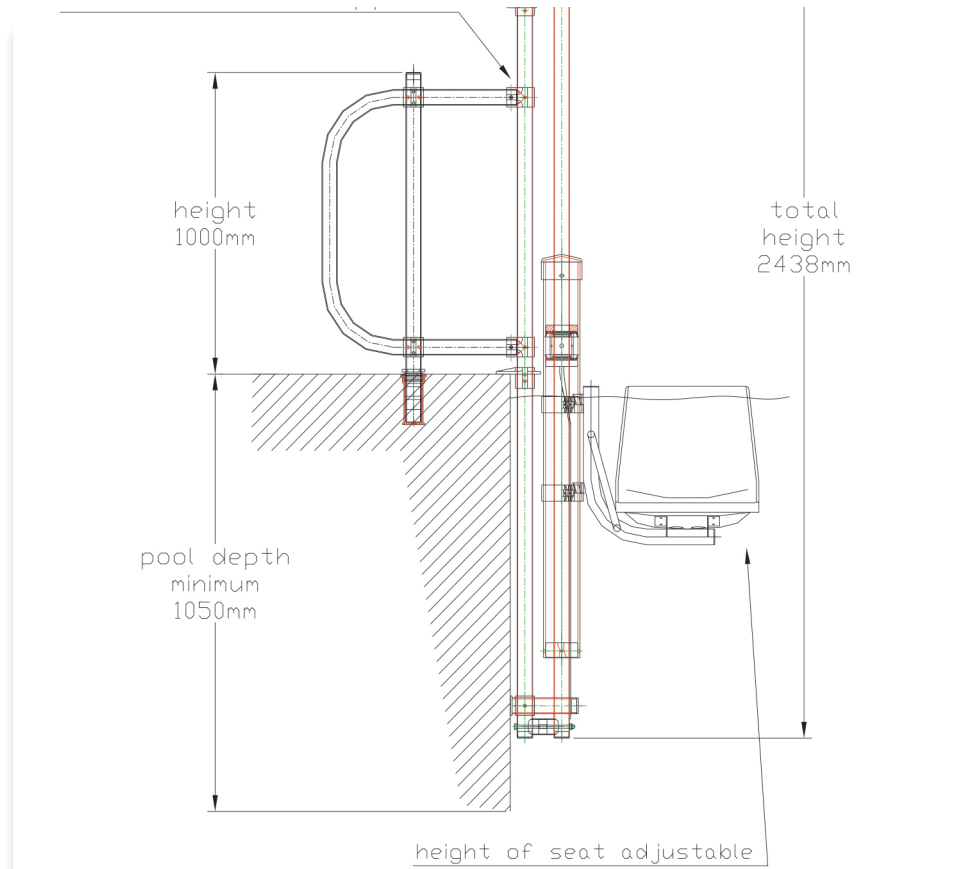


► **Material:**  
Stainless steel AISI 316



# HOW IT WORKS

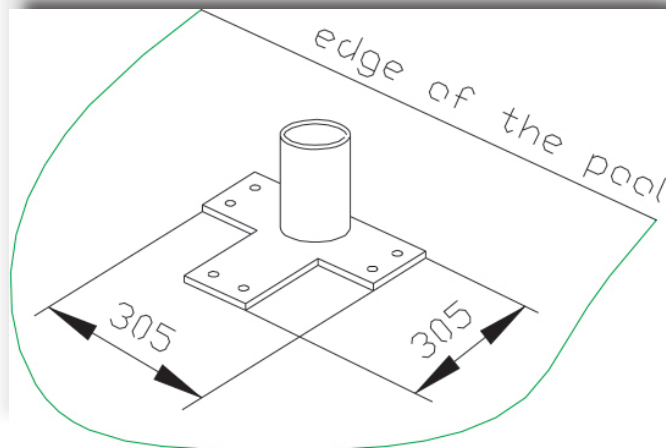
A simple operating lever allows the seat to move gently into the water as well as raise the user to the edge of the pool. Meanwhile the seat turns through 90 degrees, making transfer by the user from the wheelchair to the PoolLift seat smooth and safe.





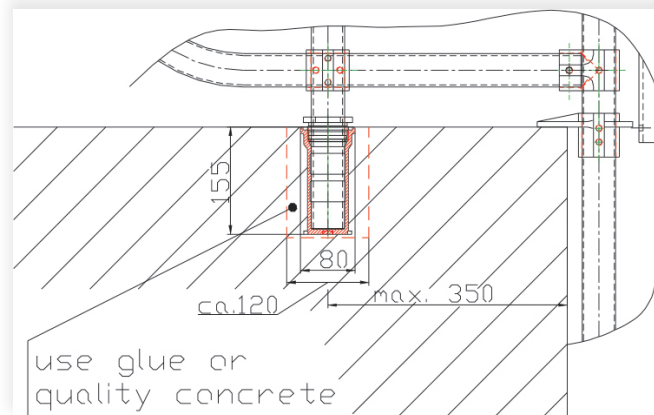
## FIXING - VERSION A

A hole with a diameter of 120mm and a depth of 155mm is drilled into the edge of the pool. The countersunk socket is glued or concreted in place.



## FIXING - VERSION B

A fastening console is screwed onto the surface of the pool edge.



## SPECIFICATIONS

The PoolLift is a valuable aid to facilitate getting in and out of a swimming pool independently.

Max.lifting capacity	130kg
Lifting height [standard ]	1067mm
Max.Lifting height	1220mm
In pool depth	1050mm
Necessary water pressure	3.8bar



**BRISBANE**

2/32 Northlink Place  
Virginia QLD 4014

**SYDNEY**

10 Rochester Street  
Botany NSW 2019



*Ask us about our*  
**FLEXIBLE PAYMENT PLANS**



1300 134 011



info@directlifts.com.au



www.directlifts.com.au