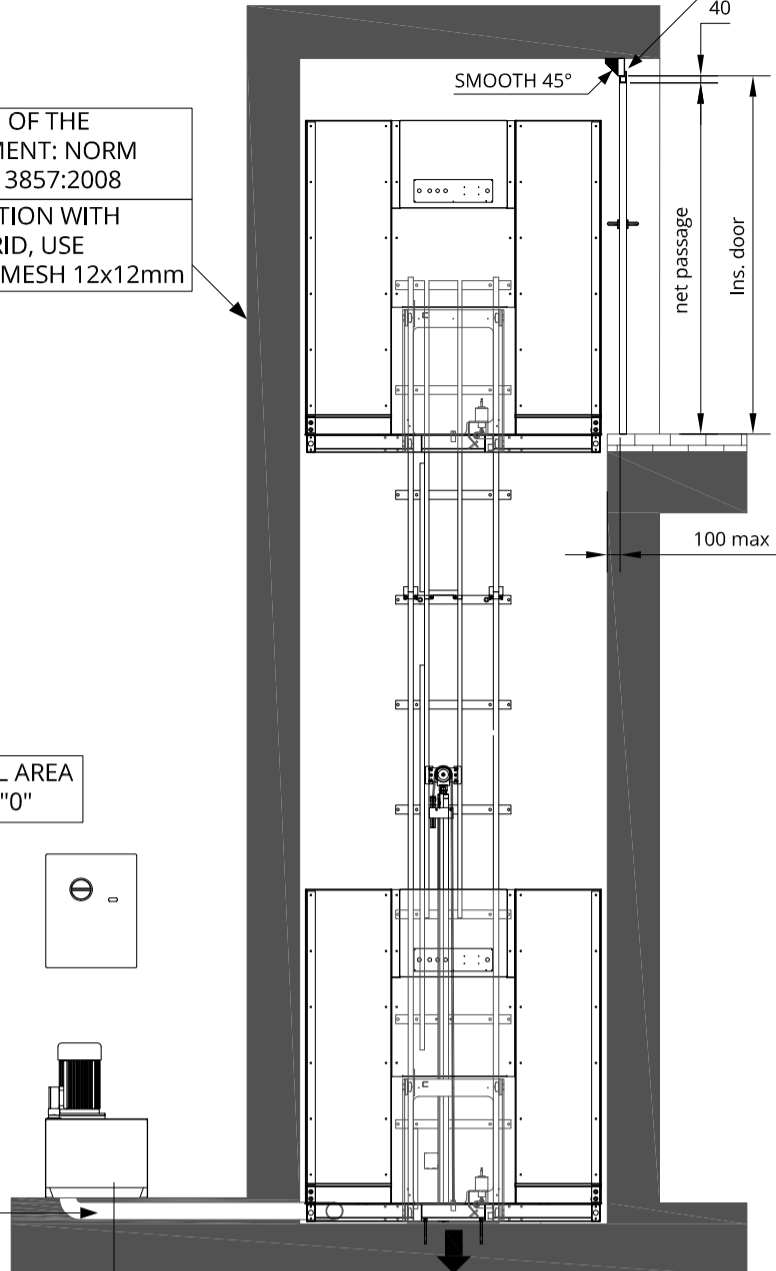


FOR THE DOOR INSTALLATION
PLEASE CONSULT THE
INSTALLATION MANUAL

PROTECTION OF THE
COMPARTMENT: NORM
UNI-EN-ISO-13857:2008
FOR PROTECTION WITH
METALLIC GRID, USE
A COMPACT MESH 12x12mm

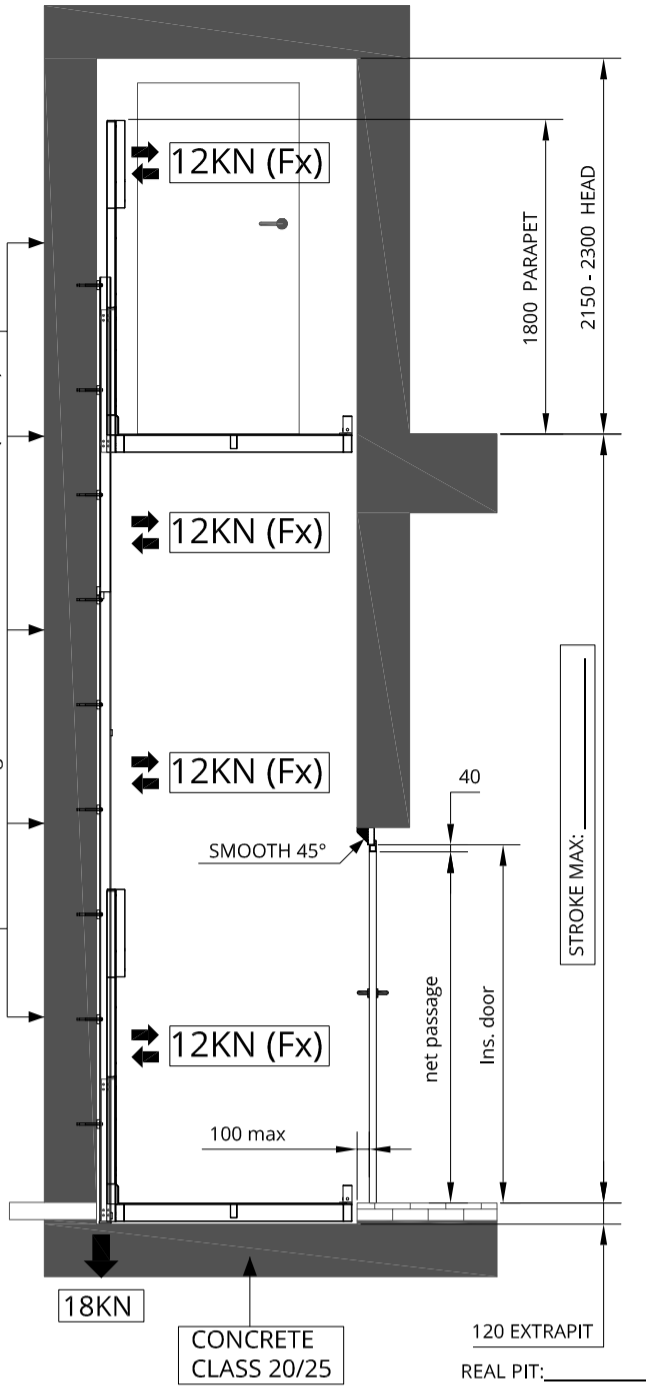
TECHNICAL AREA
AT FLOOR "0"



PREPARE CORRUGATED
TUBE Ø10cm TO THE
TECHNICAL AREA

MAX DISTANCE
FROM GOODSLIFT TO
TECHNICAL AREA 4MT
(L. standard tube = 6 mt)

WALL IN CONCRETE CLASS 20/25
Standard fixing: Anchor mod. Fischer FBN II 12/50 (12x146)



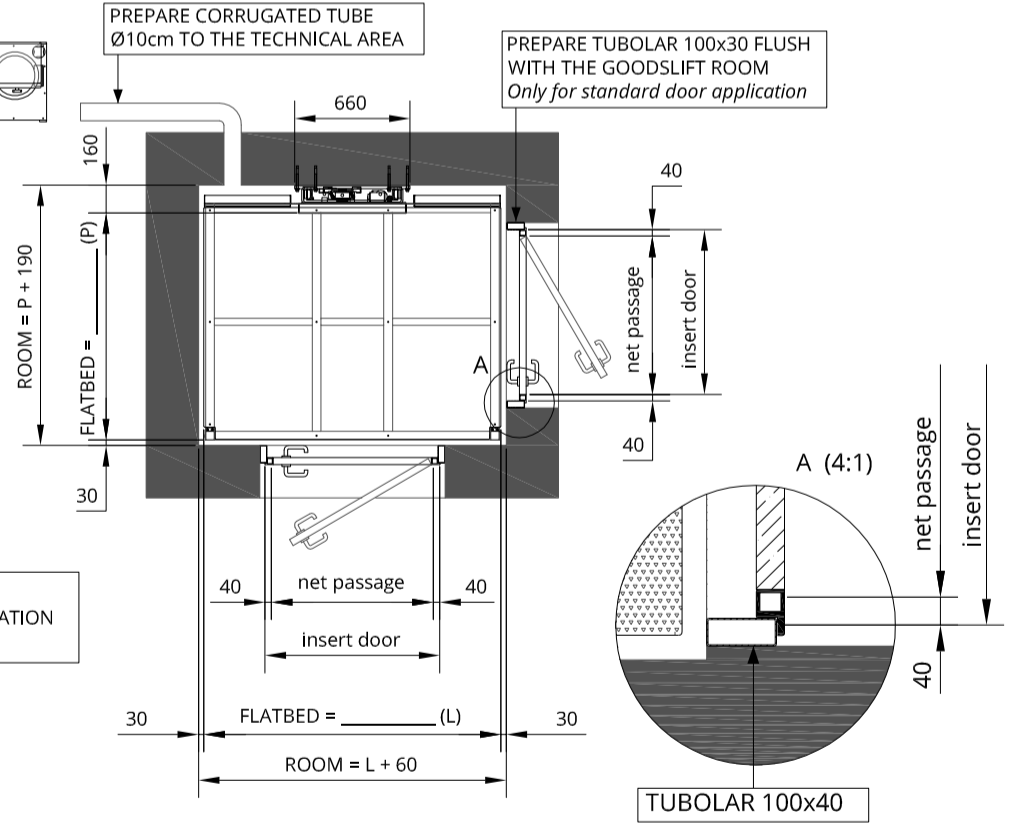
CONCRETE
CLASS 20/25

120 EXTRAPIT
REAL PIT: _____

TECHNICAL
AREA

PREPARE CORRUGATED TUBE
Ø10cm TO THE TECHNICAL AREA

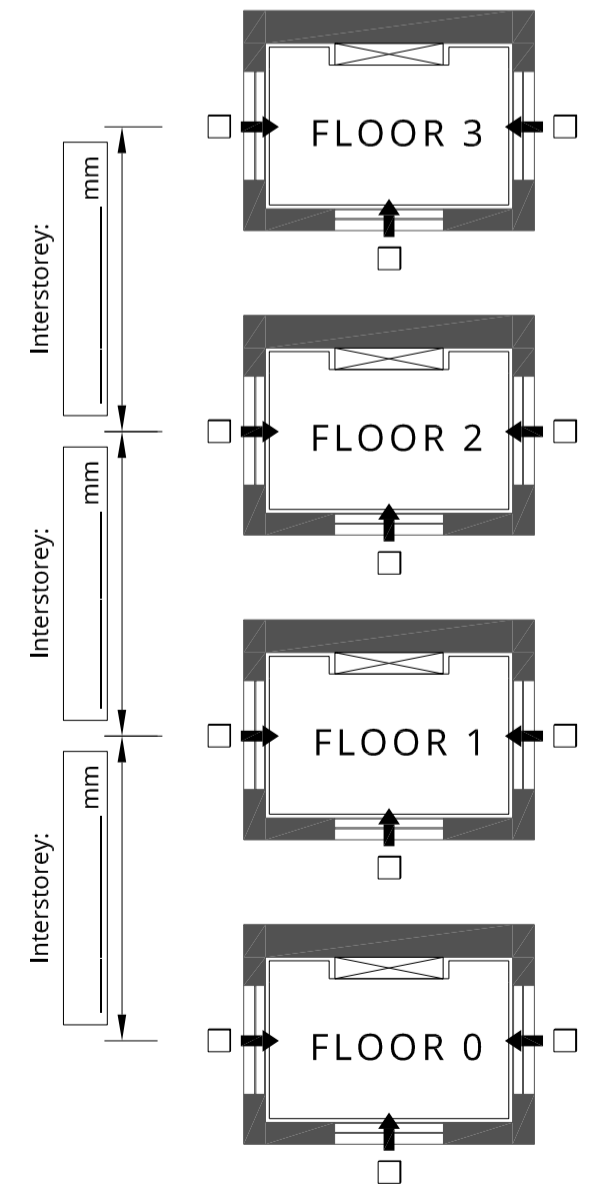
PREPARE TUBULAR 100x30 FLUSH
WITH THE GOODSLIFT ROOM
Only for standard door application



NOTE:
THRESHOLD ADAPTATION
BY CUSTOMER

TUBULAR 100x40

MARK THE ENTRANCES AND THE HEIGHT OF FLOOR



MODEL: UP3 - 300Kg UP6 - 600Kg

Date: _____

Signature for approval: _____

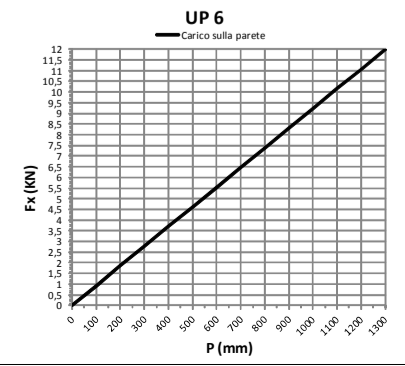
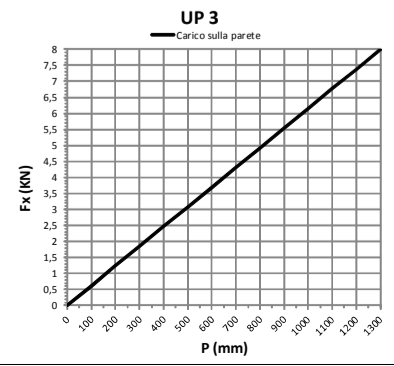


MISURE IN mm

| STROKE AND FLATBED DIMENSION | | | |
|------------------------------|------------|------------|-----------------|
| MODEL | WIDTH (mm) | DEPTH (mm) | STROKE MAX (mm) |
| UP 3 | 1700 | 1300 | 7000 |
| UP 6 | 1700 | 1300 | 7000 |

| Motore | Tensione funzionamento | Avviamento | Interruttore consigliato* | Corrente nominale | Corrente avviamento |
|--------|------------------------|------------|---------------------------|-------------------|---------------------|
| 1,5kW | 220 V - monofase | Diretto | 2x16A id=0,3A | 9,5 | 28 |
| 2,2kW | 220 V - monofase | Diretto | 2x16A id=0,3A | 10,5 | 32 |

Force on the wall, Fx function of depth flatbed



directlifts 1300 240 298 | info@directlifts.com.au | www.directlifts.com.au

Q.TA DESCRIZIONE: MODEL: UP3 - 300Kg UP6 - 600Kg STROKE MAX: 7000mm WITH OPERATOR ON BOARD

Cliente: _____ Data: 07/11/14
Disegno n°: TAV-UP36-SPB01
Sostituito da: _____
Sostituisce il: _____

Formo Foglio A3 Scala _____