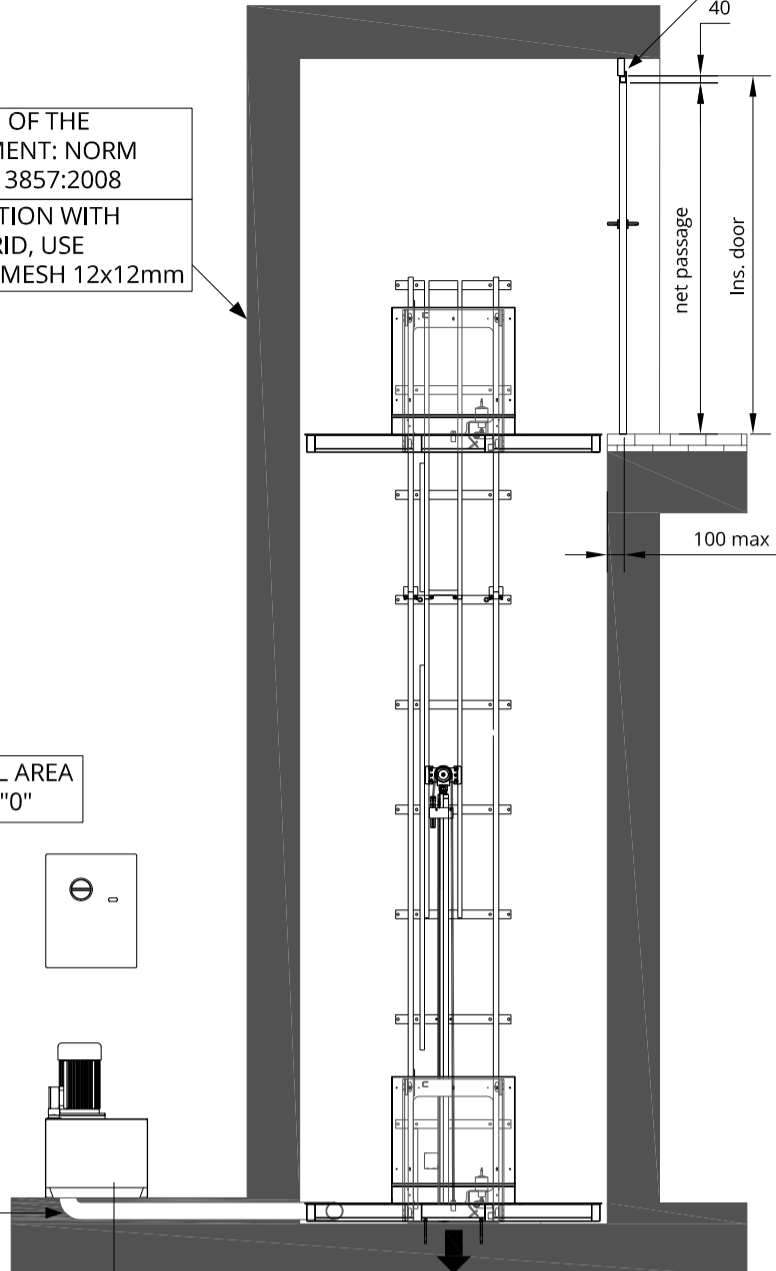


FOR THE DOOR INSTALLATION  
PLEASE CONSULT THE  
INSTALLATION MANUAL

PROTECTION OF THE  
COMPARTMENT: NORM  
UNI-EN-ISO-13857:2008  
FOR PROTECTION WITH  
METALLIC GRID, USE  
A COMPACT MESH 12x12mm

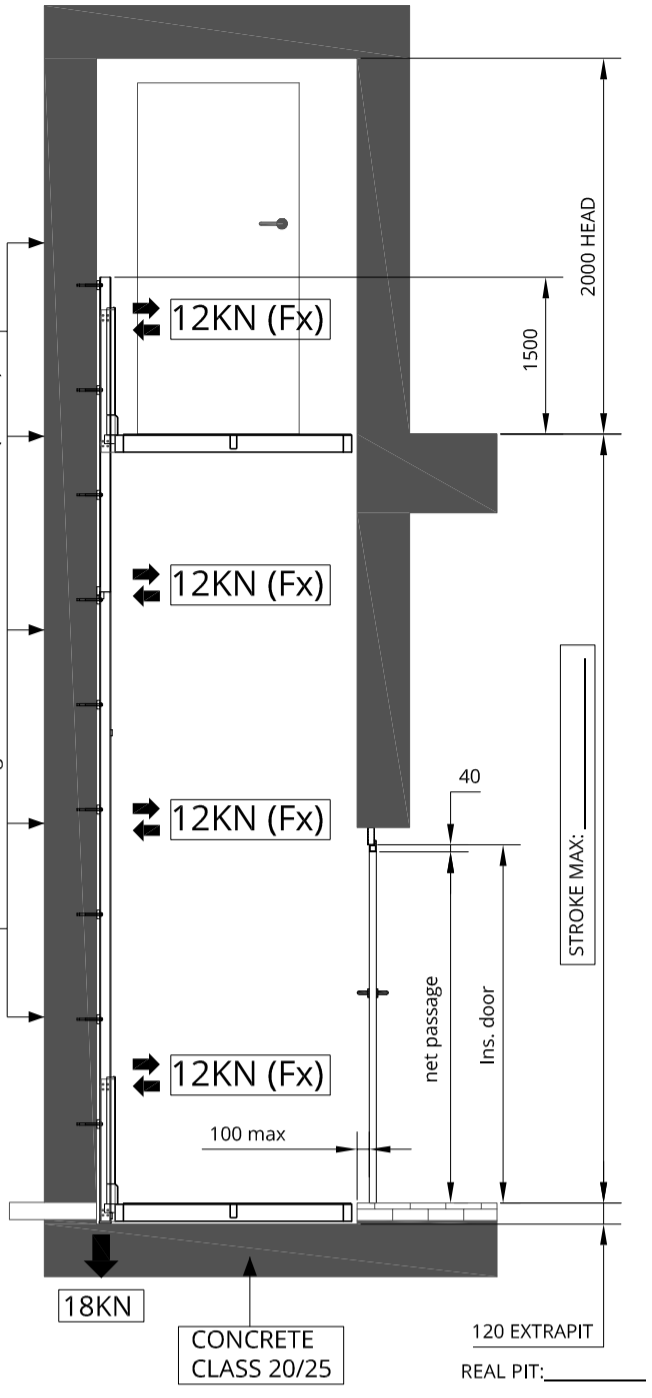
TECHNICAL AREA  
AT FLOOR "0"



PREPARE CORRUGATED  
TUBE Ø10cm TO THE  
TECHNICAL AREA

MAX DISTANCE  
FROM GOODSLIFT TO  
TECHNICAL AREA 4MT  
(L. standard tube = 6 mt)

WALL IN CONCRETE CLASS 20/25  
Standard fixing: Anchor mod. Fischer FBN II 12x146



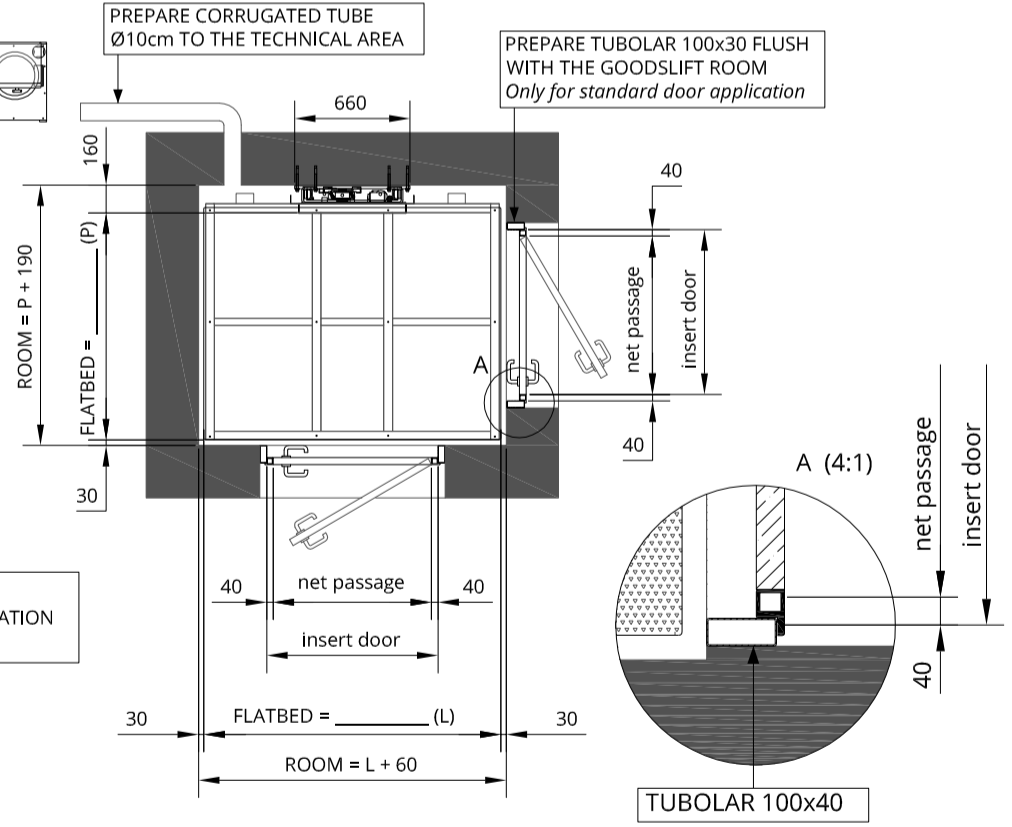
CONCRETE  
CLASS 20/25

120 EXTRAPIT  
REAL PIT: \_\_\_\_\_

TECHNICAL  
AREA

PREPARE CORRUGATED TUBE  
Ø10cm TO THE TECHNICAL AREA

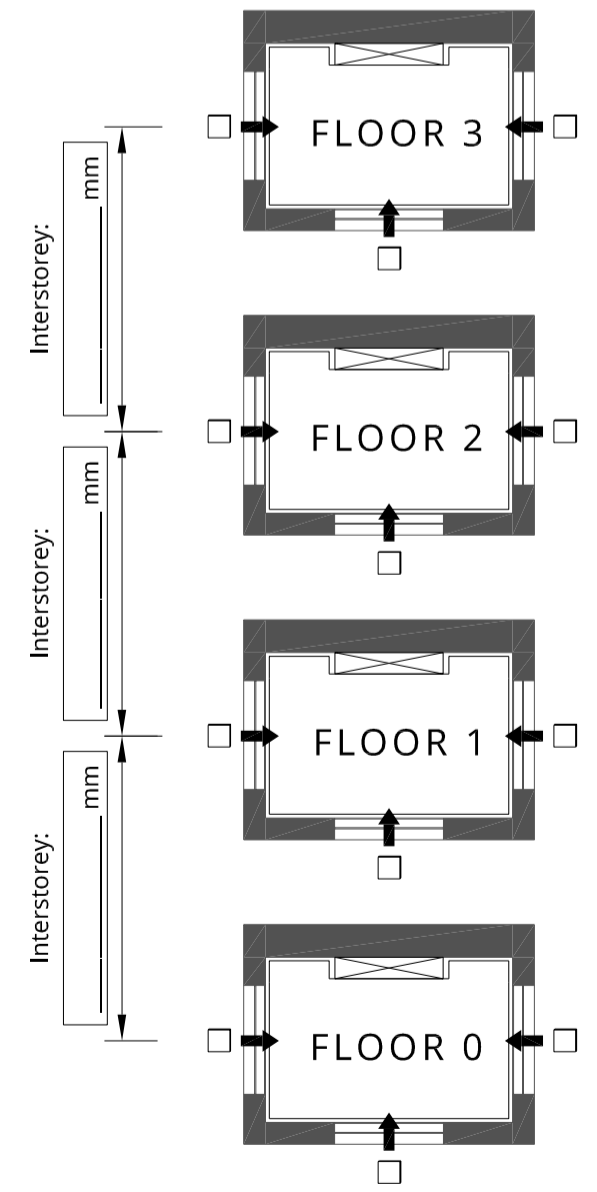
PREPARE TUBULAR 100x30 FLUSH  
WITH THE GOODSLIFT ROOM  
Only for standard door application



NOTE:  
THRESHOLD ADAPTATION  
BY CUSTOMER

TUBULAR 100x40

MARK THE ENTRANCES AND THE HEIGHT OF FLOOR



MODEL:  UP3 - 300Kg  UP6 - 600Kg

Date: \_\_\_\_\_

Signature for approval: \_\_\_\_\_



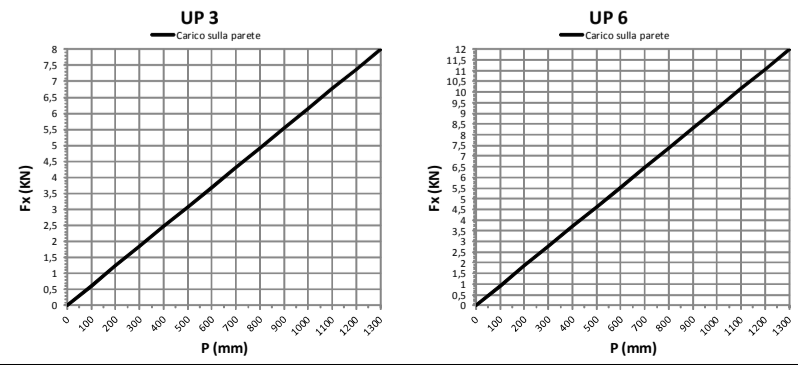
MISURE IN mm

STROKE AND FLATBED DIMENSION

MODEL	WIDTH (mm)	DEPTH (mm)	STROKE MAX (mm)
UP 3	1700	1300	7000
UP 6	1700	1300	7000

Motore	Tensione funzionamento	Avviamento	Interruttore consigliato*	Corrente nominale	Corrente avviamento
1,5kW	220 V - monofase	Diretto	2x16A id=0,3A	9,5	28
2,2kW	220 V - monofase	Diretto	2x16A id=0,3A	10,5	32

Force on the wall, Fx function of depth flatbed



directlifts 1300 240 298 | info@directlifts.com.au | www.directlifts.com.au

Q.TA DESCRIZIONE: MODEL: UP3 - 300Kg UP6 - 600Kg STROKE MAX: 7000mm ONLY FOR GOODS

Cliente: \_\_\_\_\_ Disegnato: \_\_\_\_\_ Data: 07/11/14 Disegno n°: TAV-UP36-STD01 Sostituito da: \_\_\_\_\_ Sostituisce il: \_\_\_\_\_