

# Levant

Stairlift



*Indoor  
& Outdoor*  
available



Warranty:  
2 years



Maximum  
user weight: 146kg



AS1735.7  
compliant

**ndis**

NDIS  
Registered



# Levant Classic Stairlift

For straight staircases

The Levant Classic Stairlift range delivers a solution for all indoor and outdoor straight staircase requirements and budgets. The Levant stairlift is fitted onto your staircase and not your wall. This allows the lift to be installed quickly, easily and with minimal disruption to your home.

The Levant is designed to glide effortlessly along an aluminium track, providing an attractive, elegant and discreet addition to your home. Built using the latest technology, the Levant range can be fitted to almost all straight staircases as narrow as 740 mm.

## 1 It's All About You

The thick and luxurious padding ensures a firm and comfortable seat. The upholstery is in a neutral tone - sisal, that will fit with any decor style. The upholstery is also fire retardant, liquid repellent and easy to clean. The Levant stairlift is operated with an easy to use joystick which can also be removed to prevent unauthorised usage.

## 2 Compact & Discreet

The Levant design is simple, sturdy and above all satisfies your accessibility requirements. Remote control handsets allow the Levant to park at either the top or bottom of the staircase, wherever is the most convenient for you. When not in use the Levant stairlift is folded away to only 380 mm on any landing, out of the way of any other staircase users.

## 3 Safety

Your safety is of paramount importance to us. The Levant stairlift is certified to machine directive 2006/42/EG and it is also compliant with Australian Standard AS1735.7. During travel the retractable seat belt will keep you secure on the stairlift. If the lift encounters an obstacle it will safely come to a stop as a result of special safety edges on the drive unit. The stairlift is battery operated, which means you can still use it during a power cut.





The Levant's aluminium rail has a slim design giving a modern and clean look.



I just love my Levant stairlift! I had real difficulties climbing the stairs, but now I just sit in comfort on the stairlift, no more problems."





## Optional Extras

Levant Classic & Comfort

A Levant stairlift is the ideal solution for your staircase. With a smooth aluminium track, this stairlift can be fitted to almost any straight staircase.

### Automatic Powered Hinge



If you have an obstruction at the foot of the staircase you can choose to have an automatic powered hinge installed. Once you have used the stairlift it will return to the top of the stairs and the lower section of the rail will fold away, leaving the bottom of your staircase clear.

### Maximum Weight



As standard the Levant will support weights of up to 146 kg.

Move between all levels of your home with maximum comfort and safety.



# ▶ Levant Comfort Stairlift | An array of options & enhancements



As standard, the **Levant Comfort** comes with a linked seat and footrest.



## ▶ Levant Comfort Stairlift | An array of options & enhancements

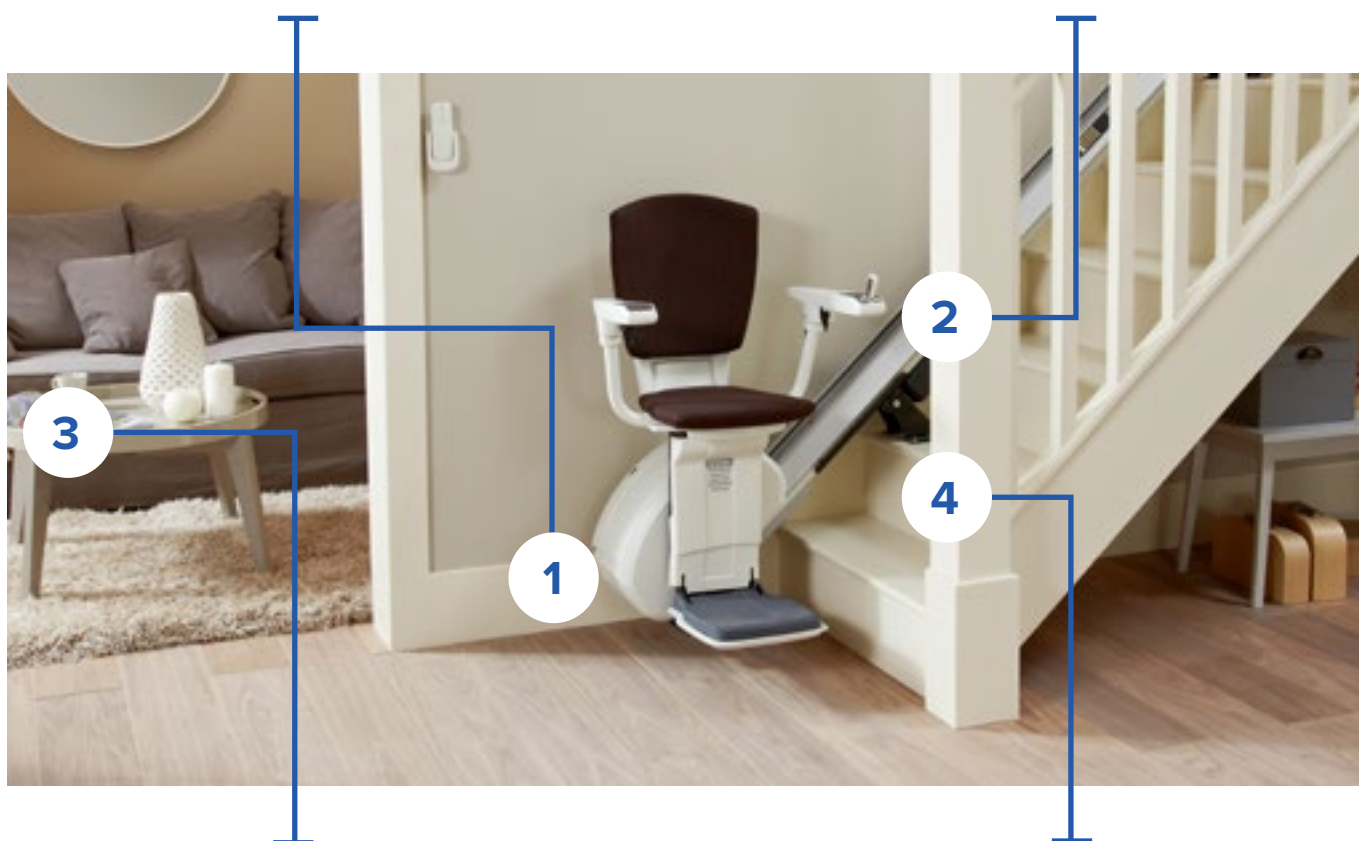
Choosing Levant Comfort means you receive all the features and benefits of the Levant stairlift with further options and upholstery selections to ensure the perfect fit in your home. The Levant Comfort proves to be the ultimate marriage of elegant design and hi-tech functionality for any straight staircase.

### Linked footrest

As standard, the Levant Comfort comes with a linked seat and footrest. As you raise the seat, the footrest automatically folds up leaving your stairway clear for other users.

### Ergonomically-shaped seat

Designed with ergonomic experts the Levant Comfort uses a seat which positively influences your posture while offering maximum comfort.



### A world of choice

As well as the quality enhancements that come as standard with the Levant Comfort, there are a number of options available which include a wide array of upholstery colours. Choose from fabric and vinyl seat covers to match the style of your home and décor.

### A greater sense of security

Your stairlift should make you feel safe. The Levant Comfort comes with a retractable seat belt and can be fitted with curved armrests to help keep you secure on the lift. It is also possible to fit straight armrests if you would prefer this.



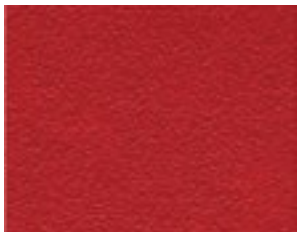
# Levant Comfort Options

Match your home interior

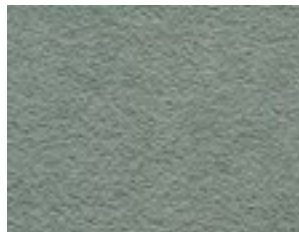
With an added choice of upholstery and functionality options, Levant Comfort is an elegant and attractive addition to your home.

## Upholstery

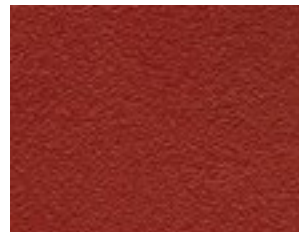
### Vinyl:



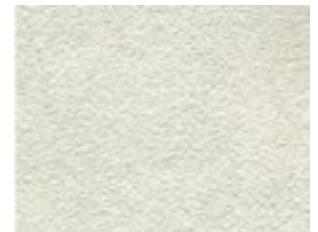
Red



Grey

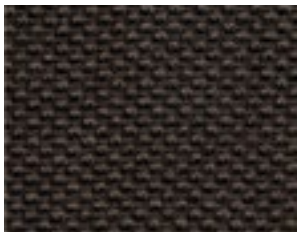


Maroon

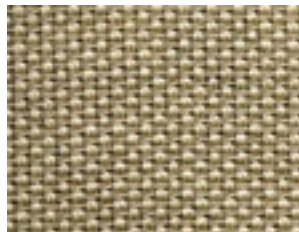


Sisal

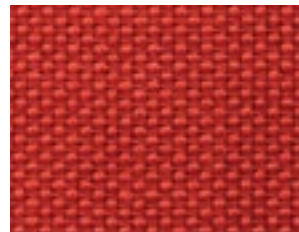
### Fabric:



Dark Brown



Beige



Red



Choose from fabric and vinyl seat covers to match the style of your home.



## Powered Swivel Seat and Adjustable Seat Height



The Levant Extra comes with a manual swivel seat as standard. Upgrading to the powered swivel seat allows you to turn the chair easily at the top or bottom landing by maintaining pressure on the joystick. This allows a safe exit from the chair as the lift automatically rotates away from the open staircase.

There are four different seat heights to choose from providing you with the most comfortable seating position possible. The footrest lies just 115mm from the floor, making getting on and off the seat as easy as possible.



## Armrest options (Comfort only)

### Straight



### Curved







## Levant Outdoor Stairlift

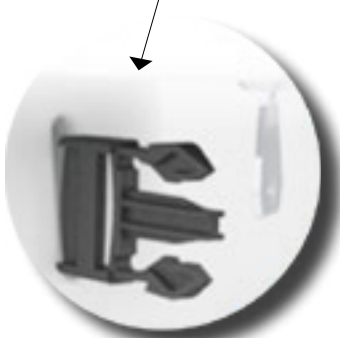
Resistant to harsh weather elements

Durable in all weather conditions, the Levant Outdoor provides a solution for any straight outdoor staircase. The Levant Outdoor has been thoroughly tested to ensure it can withstand the varied conditions across the Australian landscape.



### Design features to ensure longevity include:

- Chair, drive unit and joystick are waterproof
- Rail is made of anodised aluminium and uses stainless steel screws
- Covered side positioned rack to prevent leaves and other debris catching with the carriage
- Folding waterproof seat
- Waterproof cover fully covers the lift and provides protection from the elements.



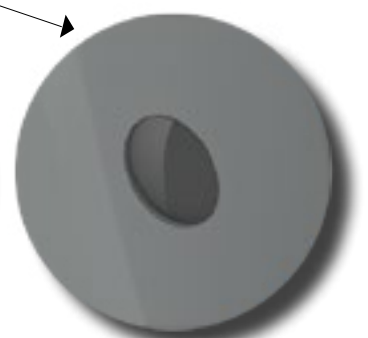
**Safety belt**



**Waterproof UI & key switch**



**Double sided swivel**



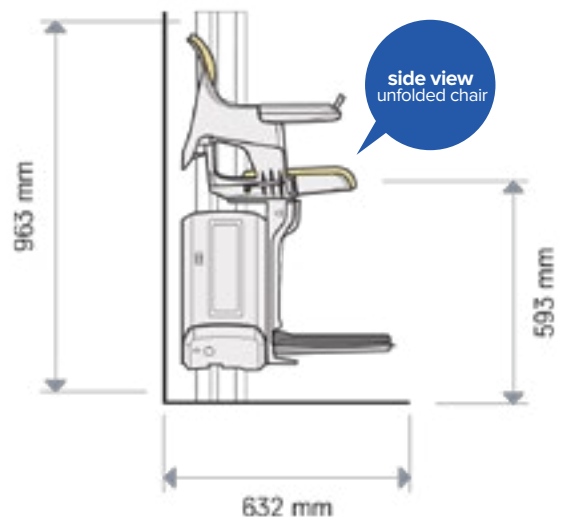
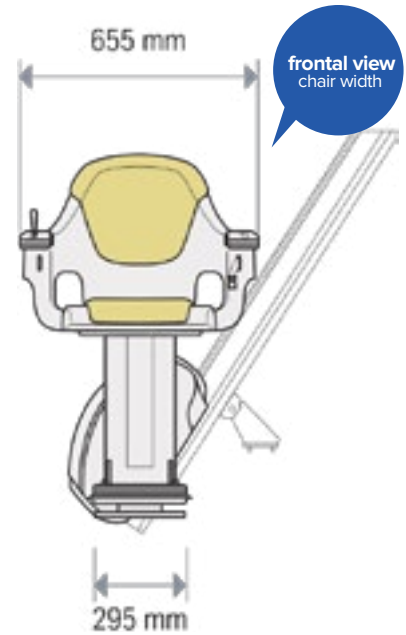
**Call & send IR receiver**

The infrared call & send stations mean the stairs are completely free of cable and wires and provides a nice clean installation. The Levant Outdoor is operated by a joystick that also functions as a key, allowing you to lock the lift whilst not in use.

With a maximum user weight of 146kgs, the Levant Outdoor allows you access to your home as well as the ability to continue to enjoy the beautiful outdoor areas your home has to offer.

# Levant Classic & Outdoor | Technical specifications

<p><b>Capacity</b>                  146 kg (inclination between 28° and 45°)                  127 kg (inclination between 46° and 53°)</p>
<p><b>Operation</b>                  Battery (24 V cc)</p>
<p><b>Rails</b>                  Rack and pinion drive system                  Extruded anodized aluminium</p>
<p><b>Speed</b>                  Max 0,12 m/s</p>
<p><b>Inclination</b>                  Between 28° and 53°</p>
<p><b>Power Requirements</b>                  Power supply 220/240 Volt, 2 dry batteries 12 Volt, 7A/h</p>
<p><b>Application</b>                  Straight single flight of stairs with constant gradient</p>
<p><b>Commands</b>                  Wireless controls, joystick which functions as a key, 2 battery operated wireless call &amp; send stations on top &amp; bottom of the stairs, radio frequency of 866 Mhz</p>
<p><b>Safety devices</b>                  Anti-crush sensors in the event of obstacles on the stairs</p>
<p><b>Installation</b>                  On the steps of the stairs</p>
<p><b>Optional</b>                  Hinged rail</p>
<p><b>Compliance</b>                  CE, AS 1735.7</p>



# Levant Comfort Stairlift

## Technical specifications

### Capacity

146 kg (inclination between 28° and 45°)

127 kg (inclination between 46° and 53°)

### Operation

Battery (24 V cc)

### Rails

Rack and pinion drive system  
Extruded anodized aluminium

### Speed

Max 0,12 m/s

### Inclination

Between 28° and 53°

### Power Requirements

Power supply 220/240 Volt, 2 dry batteries 12 Volt, 7A/h

### Application

Straight single flight of stairs with constant gradient

### Commands

Wireless controls, joystick which functions as a key, two battery operated wireless call & send stations on top and bottom of the stairs, radio frequency of 866 Mhz

### Safety devices

Anti-crush sensors in the event of obstacles on the stairs

### Installation

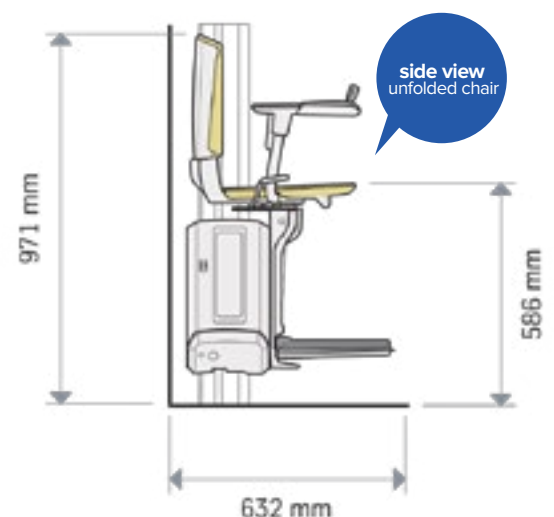
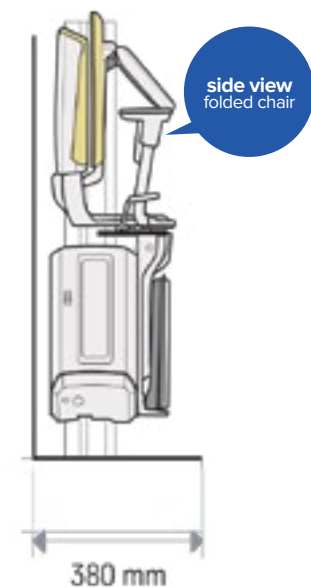
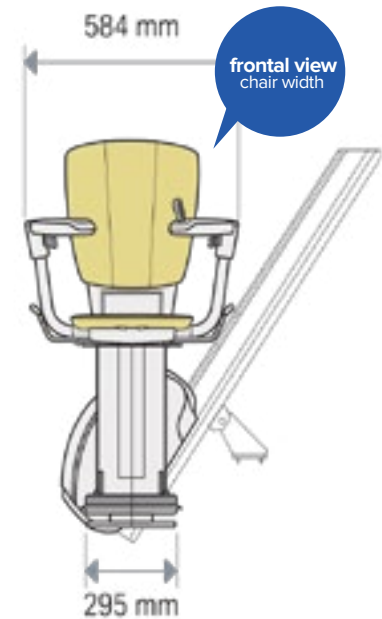
On the steps of the stairs

### Optional

Straight or curved armrests. Vinyl upholstery - choice of four colours, fabric - choice of three colours. Hinge rail, automatic swivel seat

### Compliance

CE, AS 1735.7





*Easy Hand Held Remote  
to call, and send the stairlift  
to the top or bottom  
of your stairs*



## About Direct Lifts Australia

Direct Lifts installs a wide range of lifts throughout the eastern coast of Australia including Queensland, New South Wales and Victoria, with offices in both Brisbane and Sydney. We carefully select what we consider to be the leading models available in their category.

We supply and install vertical lifts, wheelchair lifts, platform lifts, home lifts, residential elevators and a wide range of stair lifts to fit both internal and external, straight and curved stairways.



Contact us today and speak with our professional lift experts  
to discuss the best options and deals available.

GET IN TOUCH

**1300 134 011**

info@directlifts.com.au