



directlifts
AUSTRALIA

FLEX-E™
DDA LIFT



Screw-Driven Enclosed Platform Lift

Flex-E DDA is designed according to the Machinery Directive 2006/42/EC and complies with the European platform lifts standard EN81-41:2010.

- Flexible design
- **No pit required**
- Low headroom requirement (2200mm)
- **High level of security**
- Power-saving technology
- **Smart digital control system**
- Express installation
- **Exterior design options**
- Durable screw drive
- **Wide range of options and accessories**



Flex-E DDA is a vertical platform lift assembled using high quality materials and designed to meet the characteristics of ultimate performance and outstanding aesthetics.

Passengers are lifted by the platform inside the shaft which is constructed of special multi-layered aluminum sandwich type panels or glass panels. The platform moves at a maximum speed of 0.15 m/s. Every trip starts and ends with exceptional smoothness.

The platform, the control panel and its buttons are adapted to be used by any category of passenger, including wheelchair users and the visually impaired.

A screw driven system ensures durability and the highest level of security compared to other types of drives used in similar platform lifts.

Platform control system supports up to **6 stops** and **3 doors at each stop**. The lift has a standard load capacity of **400kg** and a **travel height of 4 meters**.

Design

The operation principle of Flex-E DDA is based on the screw self-locking gear. A VVVF controlled motor is mounted on the platform itself and rotates a threaded nut, which moves along the stationary threaded rod thereby smoothly lifting the platform.

The shaft is constructed on the basis of an anodised aluminium frame interconnected with the panel type of the client's choice. Multi-layered powder-coated sandwich panels or laminated glass panels come as standard selections and can be mixed and matched to suit.

“ This type of construction is aesthetically pleasing, modern and gives a clear view of the surroundings.”

A maximum of three doors may be installed on each floor with either left or right swing.

By request, the platform and panels can be painted in any color of the European RAL range.

The standard color for the Flex-E DDA is RAL9006 (**white aluminum**).



Application

Flex-E DDA is designed for use by all types of passengers, including the elderly and people with limited mobility.

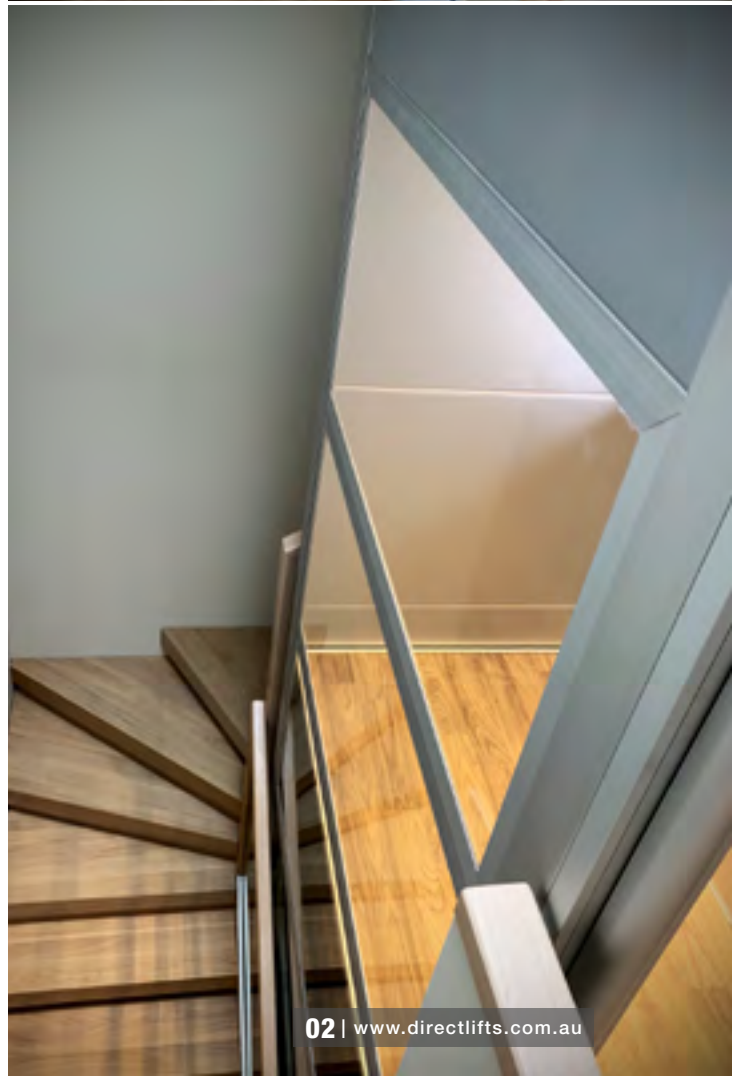
Flex-E DDA is able to be fitted in both interior and exterior locations for new and existing buildings.

Flex-E DDA has all the essential qualities of a platform lift:

- Compact overall dimensions
- Low 50mm pit or no pit (50mm entry ramp)
- No machine room or external cabinets
- Quiet operation
- Low energy consumption use.

Flex-E DDA is often installed in schools, offices, libraries, museums, and public areas requiring compliant access with occasional use.

Flex-E DDA is durable, adaptable and fully compliant with NCC E3.6 for heights of up to 4m as a “Low rise, low speed constant pressure lift - enclosed type”.



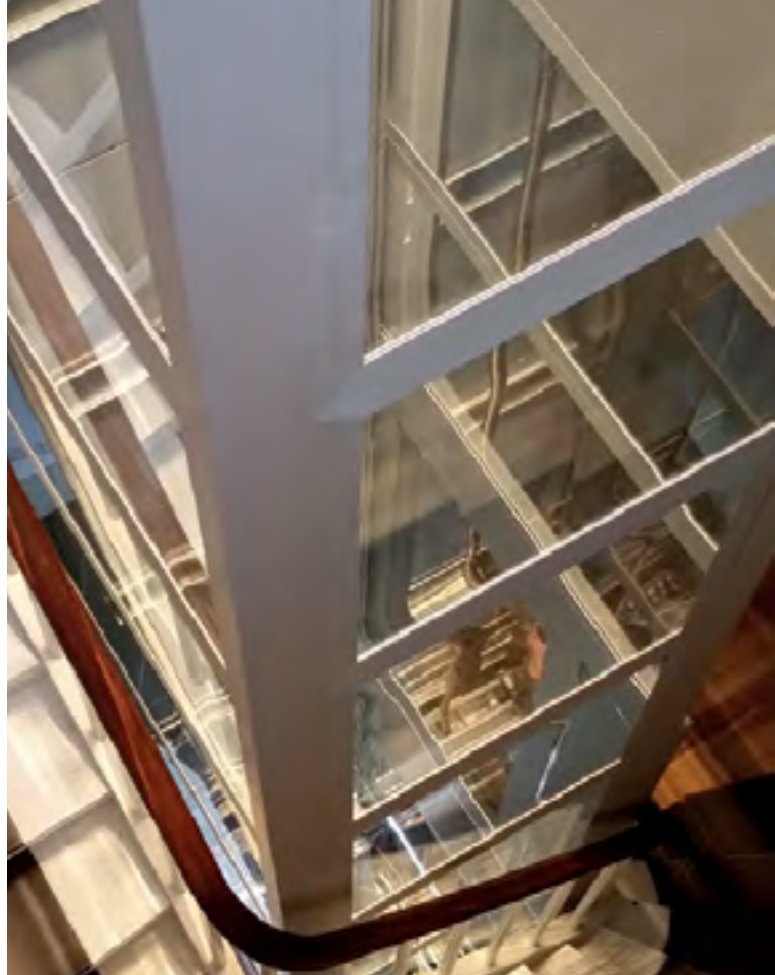
Comfort

A standard platform (1400x 1100mm) ensures a comfortable journey for a person using a wheelchair and their attendant.

The control of the platform is very simple and intuitive to use with large easy to press buttons with braille.

A passenger may stop and resume the moving direction of the lift at any time of the trip and even change the lift's moving direction.

The lift controller ensures a smooth ride from beginning to end and avoids any sudden movement for sensitive people. A comfortable handrail and the buttons on both sides of the platform are both at a convenient height in either sitting or standing positions.



LED Lightning



Flex-E DDA's Eco-friendly design includes a sleep mode feature which turns off LED lighting and other items when the lift is not in use.

The latest LED technology is used for lighting of the Flex-E DDA making it cost-effective, durable and allowing for a wide palette range. The LED elements provide uniform illumination and an excellent aesthetic appearance.

A backup battery installed in each Flex-E DDA will provide the platform the necessary level of lighting for several hours as well as allowing the lift to move to the closest floor to let the user out.

The platform floor cover is made of **anti-skid rubber** , which is durable and resistant to wear

The floor coating material may contain **logos, promotional materials or pictures** if required.



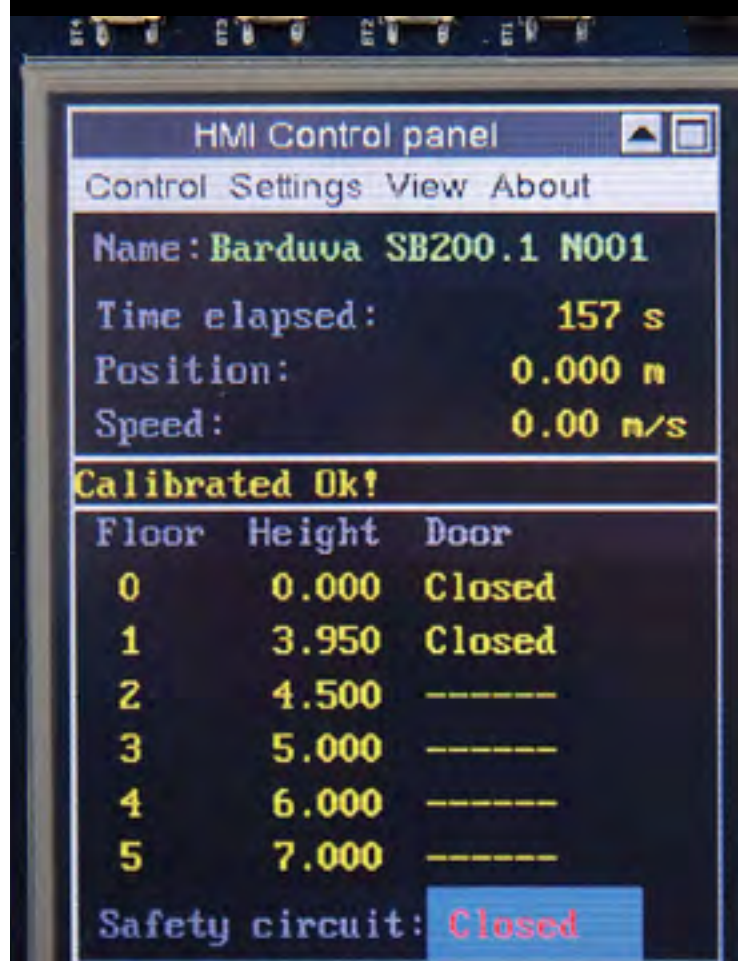
Innovations

Flex-E DDA combines time-tested design solutions and new approaches to electronic control and fault diagnosis.

Using the highest quality materials and components, leads to increased longevity of the lift and minimises the downtime associated with troubleshooting and maintenance. In other words - increased reliability!

The control system can be equipped with a special diagnostic module that provides detailed information on the status of all platform nodes and system sensors.

Useful statistics are recorded such as the number of trips, distance traveled and log of faults. It also enables adjustments on the operating settings including speed, smoothness, the height of stops, lock closing time, button modes and much more.



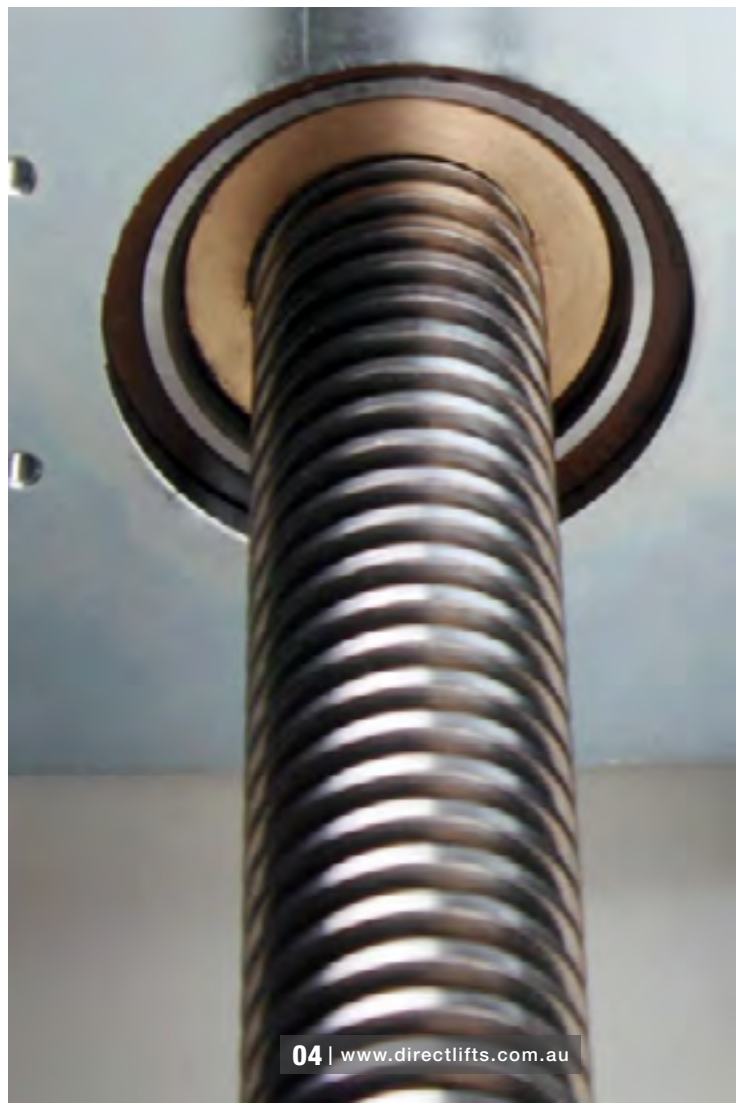
Cost Efficiency

The efficiency of Flex-E DDA is achieved by using lighter materials, power saving lighting technologies and via the latest Omron electric drive.

The electric drive of the lift is VVVF controlled which provides optimal power usage compared to directly connected motors.

In addition it also enables adjustment to the speed and smoothness of the platform's movement.

The Flex-E DDA lift is available with either three-phase or single-phase frequency converter depending on the capabilities of the existing electrical circuit and expected lift usage.



Reliability & Security

Product reliability is crucial to both users and owners. Long term testing has shown that even after 50,000 cycles and more than 60,000 metres of travel the wear of the main gear was hardly noticeable.

The microprocessor control system of Flex-E DDA lift has passed stringent tests of electrical interference and has received a certificate of electro magnetic compatibility (EMC).

The safety devices on the Flex-E DDA have been independently tested to comply with one of the most stringent European standards EN81-41:2010.



Technical Specifications

Rated load	400kg
Capacity	Up to 5 persons
Drive system	Screw-driven
Speed	Adjustable, maximum 0.15 m/s
Power supply	220-240 V, 1 phase; 380-400 V, 3 phase, 50 Hz
Engine	2.2 kW
Frequency converter	Comes as standard
Travel height	Up to 4 metres
Landings	Up to 6
Platform dimensions	1100 x 1400 (Length x width, mm)
Shaft dimensions	1640 x 1540 (length x width, mm)
Door clearance	940 x 2000 (length x width, mm)
Door configuration	Right or left swing, up to 3 doors per landing
Shaft walls	Aluminum profiles with glass or steel panels
Color	RAL 9006 (white aluminium) as standard
Noise level	Less than 65 dB
Control system	24 V, multi-processing data line

Technical safety equipment

Safety edge in the platform, emergency stop buttons inside the platform and in the shaft, emergency stop switches, electronic speed control, overload detectors, opening control of doors and locks, screw amortisation sensors, electronic control of engine performance



Key or Fob Operated



Different Door Types

Gates; Aluminium with glass; With Impost; Aluminium; Fire proof EI60; Fire proof EW60 with a small window.



Automatic Door Openers

Internal or external door openers open and close the door automatically after a preset time. Can be ordered as an optional extra.



Panels

Platform lift shaft can be assembled using multi-layered sandwich panels and laminated glass panels.



Flooring

Lift platform floor can be covered with different colour rubber or desired textured vinyl.

Options

- Automatic door openers
- Additional floor indicators
- Automatic emergency lowering
- LED lighting
- Extra lighting options
- Voice announcer and musical theme
- Floor indicator on the platform or landing
- Ramp
- Phone on the platform
- Safe line
- Electronic contact and non-contact keys
- Remote control

Colour Customisation

The whole lift can be painted in almost any colour to suit your taste and environment. You can choose from hundreds of RAL palette colours available.





Lift Install Projects



Lift Install Projects

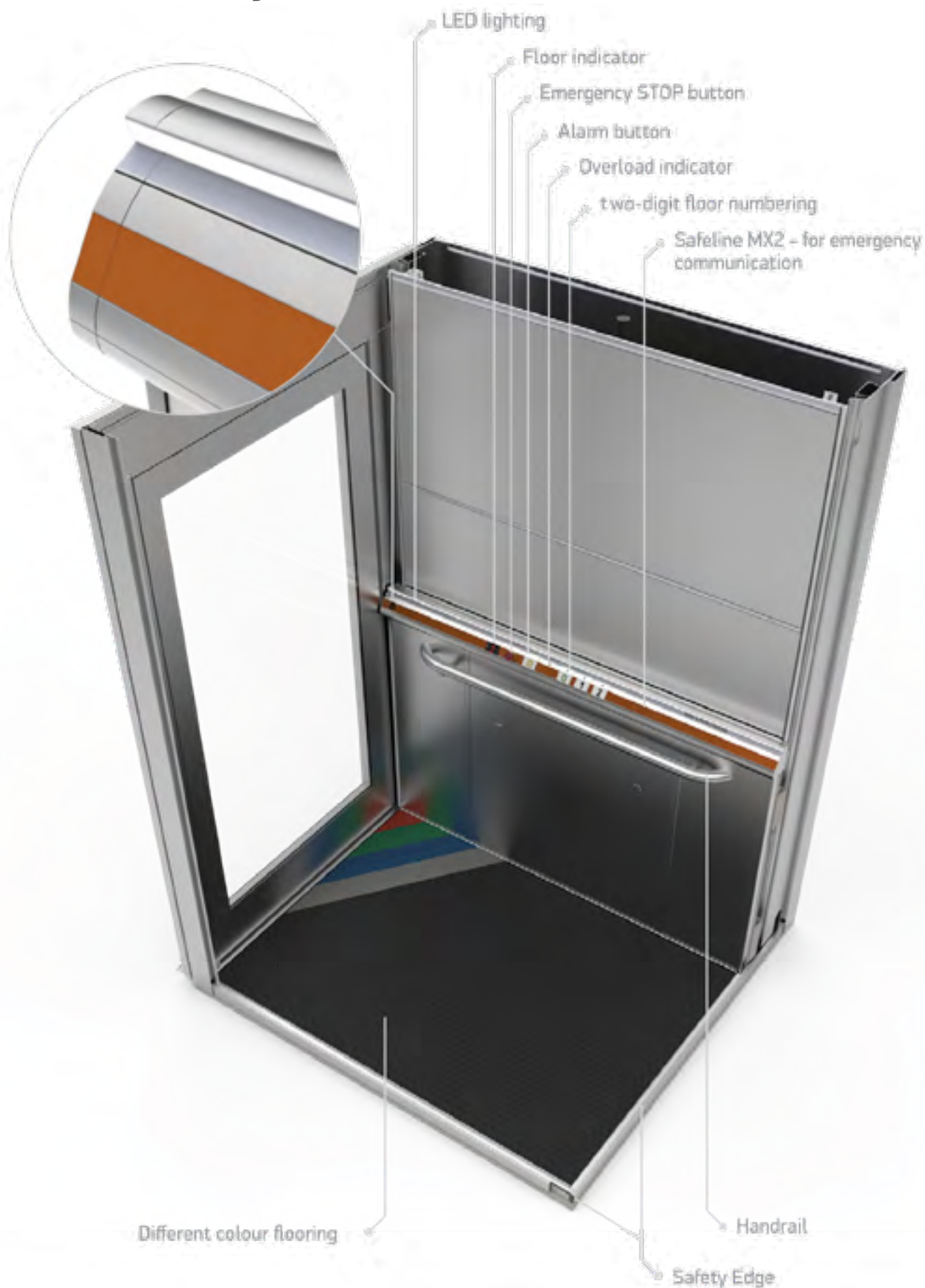


We are always open to **innovations**
and **customised solutions**.
Flexibility and responsiveness
are our main priorities.

Maintenance & error troubleshooting
is now even faster and easier
with a brand new **LED indication
device** and **WiFi module** 

Cross Section and Features

Platform Layout





Choosing Your Commercial Lift

5 key stages from enquiry to installation



Stage 1

Contact Us

Stage 2

Site Visit / Survey

Proceeding with the order we can arrange to meet a time of your choosing to measure and discuss finishes and colours.



Stage 3

Design Approval

After site survey, detailed lift drawings will be prepared. Revisions can be made as required until final design is approved. Once approved and payment stage received, lift manufacture will commence.

Stage 4

Delivery & Installation

Approximately 1 month prior to arrival, we will be in touch to schedule a pre site check and start date. Once site is confirmed ready we can deliver and begin installation of the lift. Allow between 1-2 weeks.



Stage 5

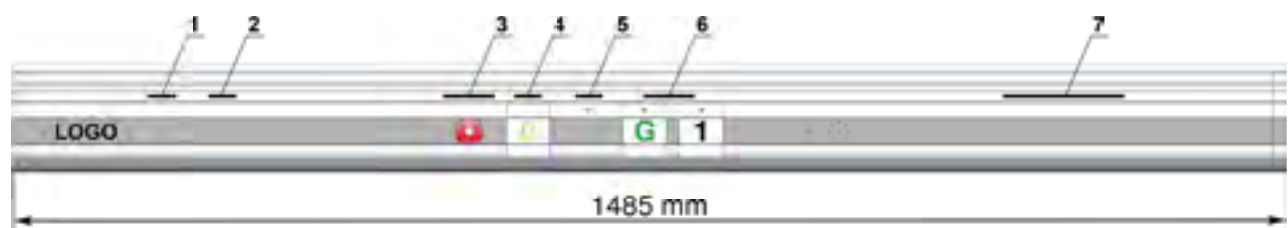
Completion

Once installation is completed we will arrange a handover meeting to provide training on how to use your lift, lift safety measures, manuals and servicing requirements.

You are now ready to use your new lift!

Actual Drawings of Flex-E DDA

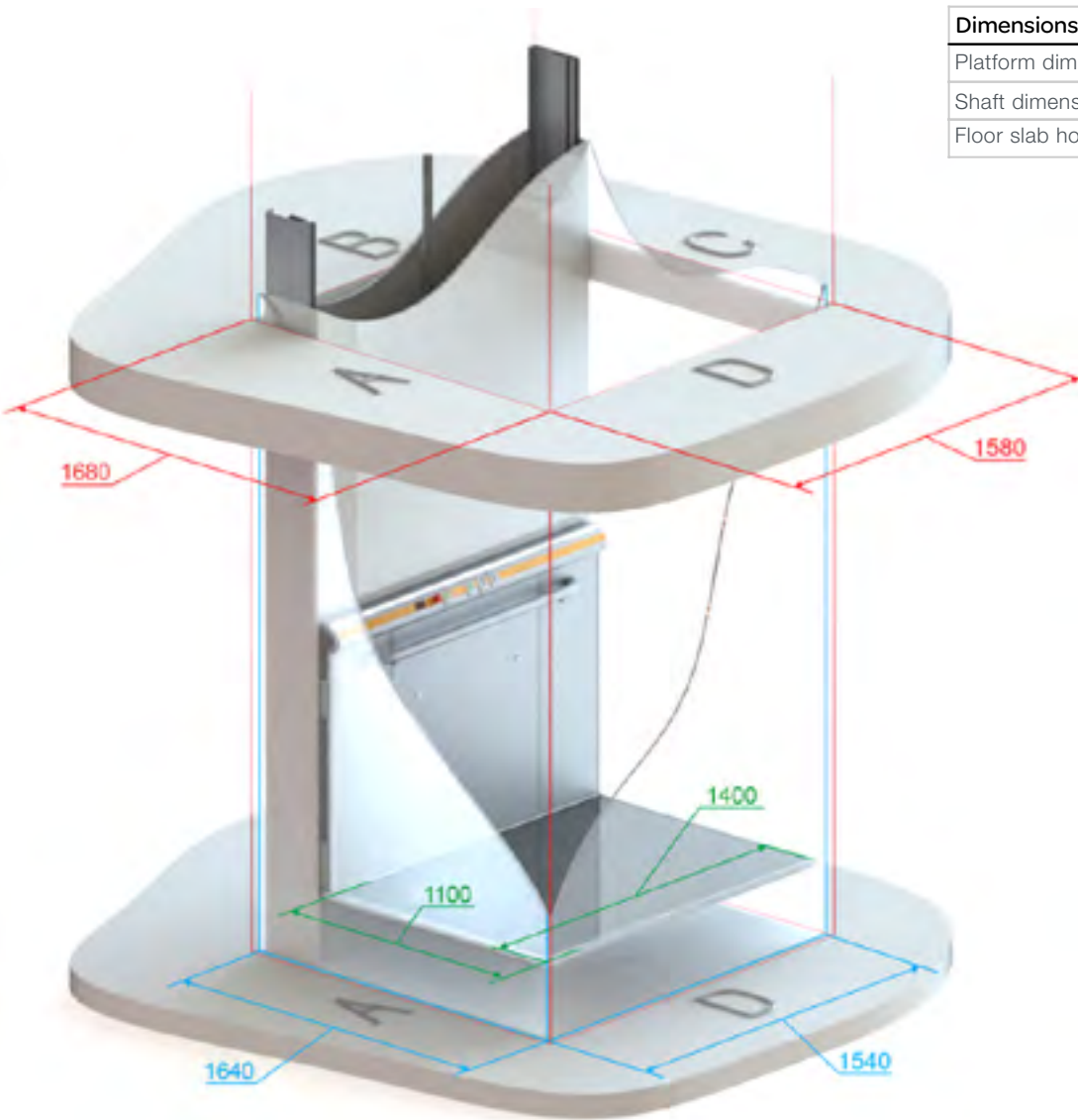
Keyboard



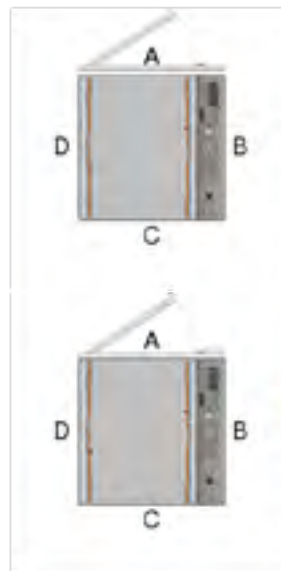
- 1. Mnf. Date: ****
- 2. Serial No: *****
- 3. Emergency Stop: Twist to release
- 4. Alarm Press for 10sec
- 5. Overload
- 6. Press & Hold
- 7. Max. 4 Pers./400kg

Logo on the control panel
Control panel strip color
Only Client logo
Silver

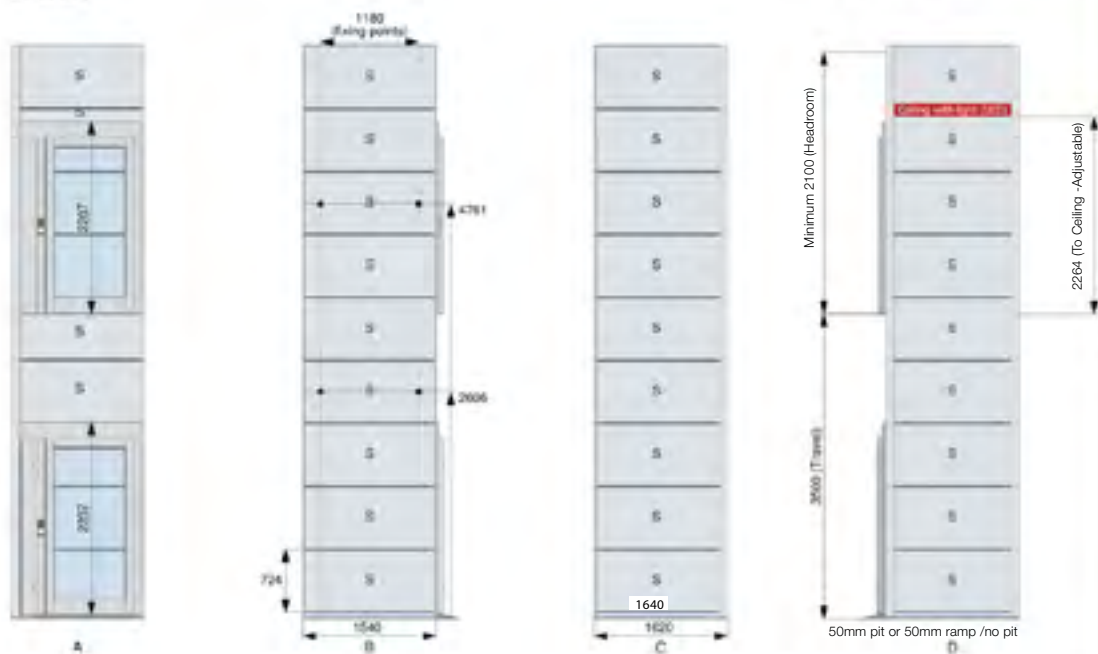
Pit, Shaft & Platform Dimensions



Dimensions	
Platform dimensions	1100 x 1400mm
Shaft dimensions	1640 x 1540mm
Floor slab hole	1680 x 1580mm



G - Glass
S - Sandwich





STAIRLIFTS



PLATFORM LIFTS



HOME LIFTS



Additional Lift Products We Offer...

directlifts
AUSTRALIA

FLEX-E
DDA LIFT

Let us know if you have a question, want to leave a comment, or would like further information about our products and services.

Contact us today and speak with our professional lift experts to discuss the best options and deals available.

1300 240 298
info@directlifts.com.au
www.directlifts.com.au